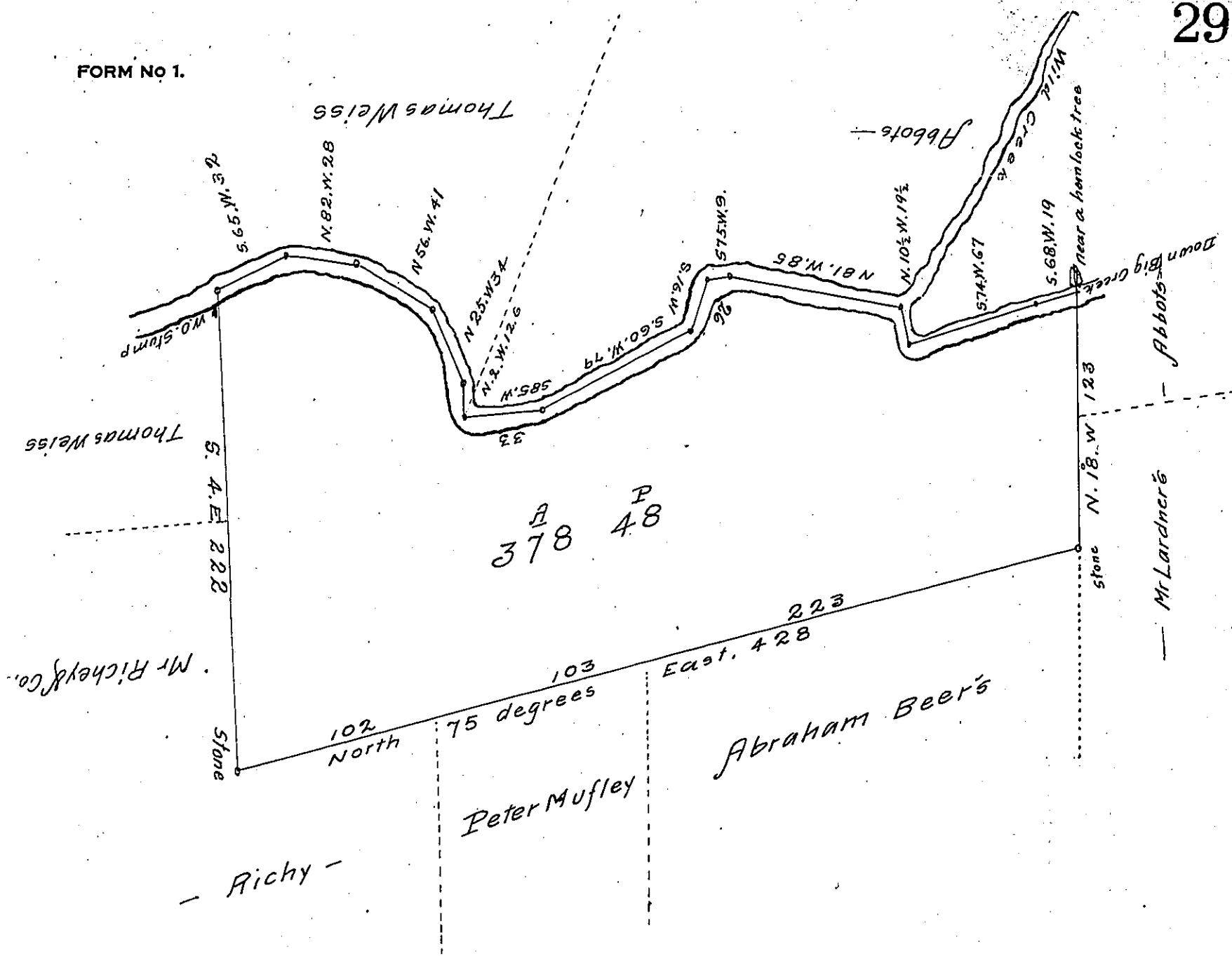


FORM NO 1.



By Virtue of a warrant dated the 31<sup>st</sup> day of December A.D. 1838 surveyed the 11<sup>th</sup> of January A.D. 1839 the above described tract of land situate on the South side of the Big Creek in town of mensing township in the County of Northampton to John Shafer containing Three hundred and seventy eight acres and forty eight perches and the usual allowance of Six per Cent for roads &c.

To John Taylor Esq<sup>r</sup> per John J. Hower for  
A W. Lerch D.S.  
Surveyor General

I believe the above survey to be correct  
A W. Lerch D.S.

IN TESTIMONY that the above is a copy of the original remaining on file in the Department of Internal Affairs of Pennsylvania, made conformably to an Act of Assembly approved the 16th day of February, 1833, I have hereunto set my Hand and caused the Seal of said Department to be affixed at Harrisburg, this fourteenth day of February 1907

*James B. Finney*  
Secretary of Internal Affairs.